

# **MANDATORY DISLOSURE**

## **2015-2016**



**Submitted by**

**Udaya School of Engineering**

Udaya Nagar, Vellamadi, Ammandivilai Post,  
Kanyakumari Dist, Tamil Nadu– 629 204

## Contents

Sl.No	Particulars
I	Name of the Institution
II	Name & Address of the Director
III	Name of the Affiliating University
IV	<b>Governance:</b>
	* Governing Body
	* Academic Advisory Body
	* Details of body meetings
V	* Organizational Chart
	* Name of the programmes approved by AICTE
	* Name of the Programmes accredited by AICTE
VI	* Details of Programmes
	<b>Faculty:</b>
	* Branch Wise faculty members
VII	* Number of faculty employed and left during the last three years
	* Profile of principal and faculties
VIII	* Details of fee as approved by state fee committee
	* Scholarship details
	* Hostel fee details
IX	<b>Admission:</b>
	* No of seats sanctioned
	* No of students admitted
	* No of applications received during last two years for admission
X	Admission procedure
XI	Criteria and Weightages for Admission
XII	Results of admission under Management seats / Vacant Seats
XIII	Information on Infrastructure and other Resources available
	* Library

## **MANDATORY DISCLOSURE**

**I. Name of the Institution** : **UDAYA SCHOOL OF ENGINEERING**  
UDAYA NAGAR, VELLAMADI,  
AMMANDIVILAI POST – 629204,  
KANYAKUMARI DISTRICT.

Telephone Number : 04651-239900, 239901

Fax Number : 04651-239903

E-mail : [978udayaengineering@gmail.com](mailto:978udayaengineering@gmail.com)

**II. Name and address of  
the Principal**

: **Dr.C.Jeyachandran,**  
Udaya School of Engineering,  
Udaya Nagar, Vellamadi,  
Ammandivilai Post – 629204,  
Kanyakumari District.

Telephone Number : 04651-239900, 239901

Fax Number : 04651-239903

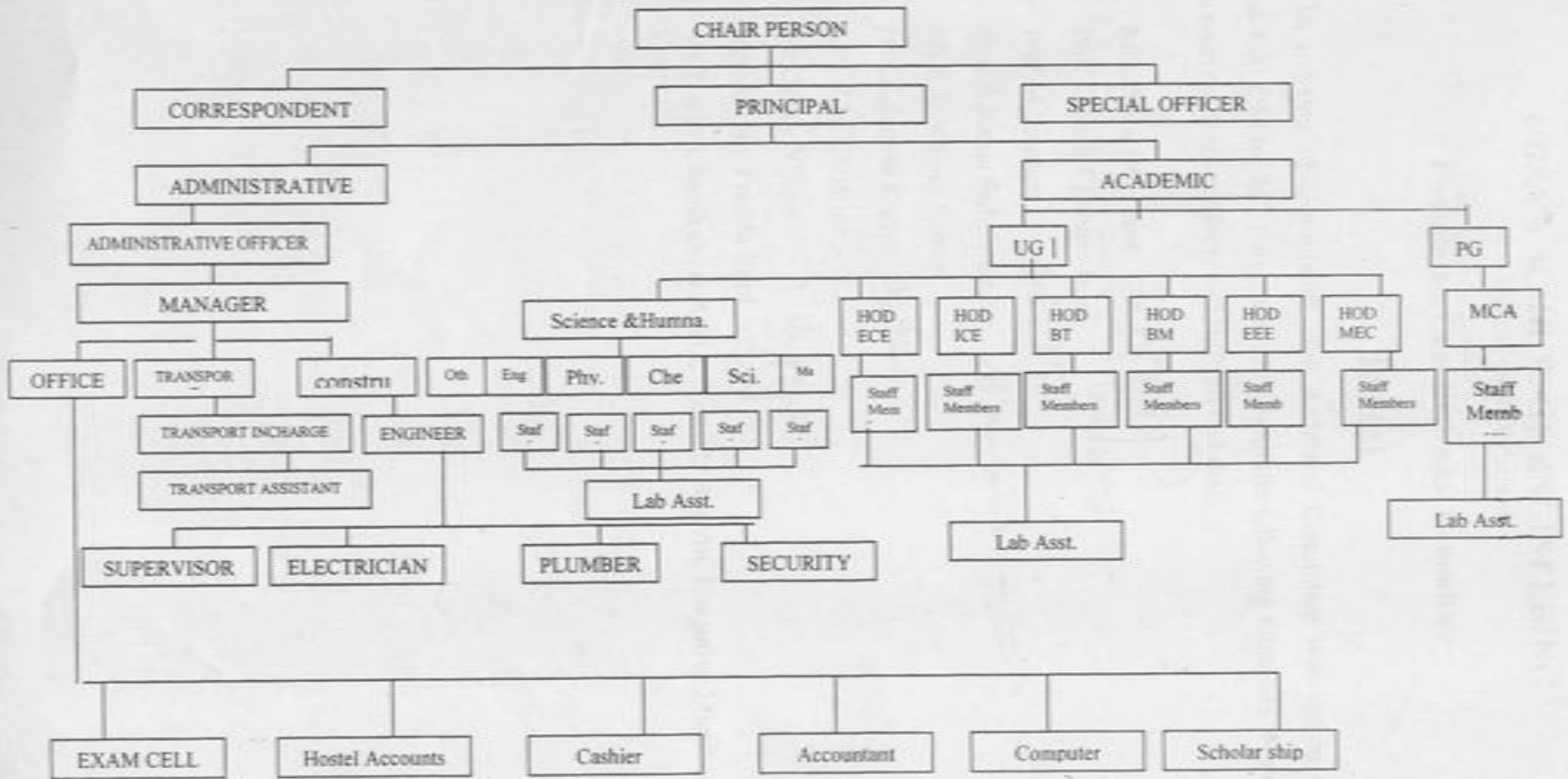
E-mail : [cjeyachandran@rediffmail.com](mailto:cjeyachandran@rediffmail.com)

**III. Name of the Affiliating  
University**

: **Anna University, Chennai**

UDAYA SCHOOL OF ENGINEERING  
Udaya Nagar, Vellamodi Jn., Ammandivilai Post

**ORGANIZATION CHART**



#### ***IV. GOVERNANCE - Details as Enclosed***

#### **V. PROGRAMMES**

- **Name of the Programmes approved by the AICTE**

<b>Sl.No</b>	<b>Name of the Programmes approved by AICTE</b>	<b>Number of Seats</b>	<b>Duration</b>
1.	B.E - Bio-Medical Engineering	60	4-years
2.	B.Tech - Bio-Technology	60	4-years
3.	B.E - Electrical and Electronics Engineering	60	4-years
4.	B.E - Electronics and Communication Engineering	120	4-years
5.	B.E - Computer science and Engineering	60	4-years
6.	B.E - Mechanical Engineering	180	4-years
7.	B.E- Civil Engineering	120	4-years
8.	B.E- Aeronautical Engineering	60	4-years
9.	M.E - Embedded Systems	18	2-years
10.	M.E – CAD / CAM	18	2-years
11.	M.E – Computer Science and Engineering	18	2-years
12.	M.E – Biomedical Engineering	18	2-years
13.	M.E – Power Systems Engineering	18	2-years
14.	M.E – Communications Engineering	18	2-years
15.	M.E – Structural Engineering	18	2-years
16.	M.Tech – Biotechnology	18	2-years
17.	M.Tech – Nano Science and Technology	18	2-years
18.	Master of Computer Applications	60	3-years
19.	Master of Business Administration	60	2-years

- Name of the Programmes accredited by the AICTE

<b>Not Applicable</b>
-----------------------

- Cut off mark / Rank for Admission during the last three years

**Year: 2014-2015**

S.No	Course	Max cut off (200)	Min cut off
1	B.E - Bio-Medical Engineering	184.50	89.00
2	B.Tech - Bio-Technology	188.50	110.00
3	B.E - Electrical and Electronics Engineering	147.75	95.00
4	B.E - Electronics and Communication Engineering	122.50	82.25
5	B.E - Computer science and Engineering	194.50	95.50
6	B.E - Mechanical Engineering	169.75	88.25
7	B.E- Civil Engineering	148.00	89.50
8	B.E- Aeronautical Engineering	144.00	113.50

**Year: 2013-2014**

S.No	Course	Max cut off (200)	Min cut off
1	B.E - Bio-Medical Engineering	180.00	89.75
2	B.Tech - Bio-Technology	159.00	98.00
3	B.E - Electrical and Electronics Engineering	141.00	87.25
4	B.E - Electronics and Communication Engineering	162.25	87.00
5	B.E - Computer science and Engineering	143.25	95.00
6	B.E - Mechanical Engineering	163.83	98.00
7	B.E- Civil Engineering	137.50	94.25
8	B.E- Aeronautical Engineering	168.00	86.00

**Year: 2012-2013**

<b>S.No</b>	<b>Course</b>	<b>Max cut off (200)</b>	<b>Min cut off</b>
1	B.E - Bio-Medical Engineering	185.75	96.50
2	B.Tech - Bio-Technology	146.50	93.50
3	B.E - Electrical and Electronics Engineering	141.25	86.25
4	B.E - Electronics and Communication Engineering	157.50	89.25
5	B.E - Computer science and Engineering	141.50	92.50
6	B.E - Mechanical Engineering	153.50	86.00
7	B.E- Civil Engineering	176.75	93.25
8	B.E- Aeronautical Engineering	143.00	114.00

\*As applicable by Tamilnadu Government

**Campus placement in last 3 years**

<b>S.No.</b>	<b>Year</b>	<b>Name of the Company/Industry</b>	<b>Number of Students Placed</b>
1	2012	TEXMO INDUSTRIES PVT LTD	27
		ALLSEC TECHNOLOGIES	4
		MICROTEK	4
		CSS	8
2	2013	TEXMO INDUSTRIES PVT LTD	28
		CSS	9
		MICROTEK	4
		HCL	4
3	2014	Drona Solutions	11
		PEOPLE TALENT	7
		SAI SOFTWARE SOLUTIONS	4
		HCL	2
		TEXMO INDUSTRIES PVT LTD	40
		HDFC	25
		SLASH SUPPORT	2
PROBE	15		

- **Collaboration with Foreign University**

Nil

**Course wise number of students admitted in the previous year**

<b>S.No</b>	<b>Course(s)</b>	<b>AICTE Approved Intake for 2013-2014</b>	<b>Actual number of students admitted for 2013-2014</b>
1	B.E - Biomedical Engineering	60	46
2	B.Tech - Biotechnology	60	12
3	B.E - Electrical and Electronics Engineering	60	22
4	B.E - Electronics and Communication Engineering	120	44
5	B.E - Computer Science and Engineering	60	21
6	B.E - Mechanical Engineering	120	141
7	B.E- Civil Engineering	60	51
8	B.E- Aeronautical Engineering	60	8
9	M.E - Embedded Systems	18	18
10	M.E – CAD / CAM	18	12
11	M.E – Computer Science and Engineering	18	18
12	M.E – Biomedical Engineering	18	9
13	M.E – Power Systems Engineering	18	18
14	M.Tech – Biotechnology	18	6
15	M.Tech – Nano Science and Technology	18	6
16	Master of Computer Applications	60	27
17	Master of Business Administration	60	17



**Branch wise List of Faculty Members:**

<b>S.No</b>	<b>Department</b>	<b>Total number of faculty</b>
1	B.E - Biomedical Engineering	12
2	B.Tech - Biotechnology	12
3	B.E - Electrical and Electronics Engineering	12
4	B.E - Electronics and Communication Engineering	23
5	B.E - Computer Science and Engineering	12
6	B.E - Mechanical Engineering	25
7	B.E- Civil Engineering	13
8	B.E- Aeronautical Engineering	11
9	M.E - Embedded Systems	3
10	M.E – CAD / CAM	3
11	M.E – Computer Science and Engineering	3
12	M.E – Biomedical Engineering	3
13	M.E – Power Systems Engineering	3
14	M.E – Structural Engineering	3
15	M.Tech – Biotechnology	3
16	M.Tech – Nano Science and Technology	2
17	Master of Computer Applications	12
18	Master of Business Administration	10
19	<b>Humanities &amp; Social Sciences (Including physical director and librarian)</b>	44

**\* Number of Faculty employed and left during the last three years**

<b>Sl.No</b>	<b>Number of faculty Employed</b>	<b>Left during last three years</b>
1.	210	185

### VIII FEE:

<b>Details of Fee Approved by State Committee</b>	Through counseling	Rs. 40000/-
	Through management quota	Rs. 70000/-
<b>Boarding and Lodging Fee</b>	Admission- Mess Charges Electricity Charges Room Rent	Rs. 3000/- Rs. 18000/- Rs.4000/- Rs.10000/-
	Total	Rs. 35000/-

### \* Scholarship Details

Year	No of Student	Categories					Amount
		Minority	MBC	BC	First Graduate BC	SC/ST	
2003-2004	18	-	1	10	7	-	46,810.00
2004-2005	38	-	1	22	15	-	96,615.00
2005-2006	70	-	3	41	26	-	1,82,835.00
2006-2007	70	-	3	35	32	-	2,19,040.00
2007-2008	109	-	3	53	53	-	3,54,210.00
2008-2009	252	14	8	106	103	21	12,57,310.00
2009-2010	378	33	11	164	153	17	24,67,183.00
2010-2011	336	41	11	151	117	16	25,28,974.00
2011-2012	388	3	30	206	135	14	17,84,164.00
2012-2013	578	20	45	328	160	25	3529371.00
2013-2014	586	33	45	262	211	35	4891540.00
2014-2015							

## IX. ADMISSION

- Number of Seats sanctioned with the year of approval

Sl.No	Year	Branch	No of Seats Sanctioned
1.	2002-2003	B.E – Electronics and Communication Engineering	60
		B.E – Instrumentation and Control Engineering	60
		B.Tech – Industrial Biotechnology	60
2.	2003-2004	B.E – Electronics and Communication Engineering	60
		B.E – Instrumentation and Control Engineering	60
		B.Tech – Industrial Biotechnology	60
3.	2004-2005	B.E – Electronics and Communication Engineering	60
		B.E – Instrumentation and Control Engineering	60
		B.Tech – Industrial Biotechnology	60
4.	2005-2006	B.E – Electronics and Communication Engineering	60
		B.E – Instrumentation and Control Engineering	60
		B.Tech – Industrial Biotechnology	60
		B.E – Electrical and Electronics Engineering	60
		B.E – Biomedical Engineering	60
		B.E – Mechanical Engineering	60
MCA – Master of Computer Applications	60		
5	2006-2007	B.E – Electronics and Communication Engineering	120
		B.E – Computer Science and Engineering	60
		B.Tech – Biotechnology	60
		B.E – Electrical and Electronics Engineering	60
		B.E – Biomedical Engineering	60
		B.E – Mechanical Engineering	60
		MCA – Master of Computer Applications	60
		MBA – Master of Business Administration	60
6	2007-2008	B.E – Electronics and Communication Engineering	120
		B.E – Computer Science and Engineering	60
		B.Tech – Biotechnology	60
		B.E – Electrical and Electronics Engineering	60
		B.E – Biomedical Engineering	60
		B.E – Mechanical Engineering	60
		MCA – Master of Computer Applications	60
		MBA – Master of Business Administration	60

7	2008-2009	B.E – Electronics and Communication Engineering	120
		B.E – Computer Science and Engineering	60
		B.Tech – Biotechnology	60
		B.E – Electrical and Electronics Engineering	60
		B.E – Biomedical Engineering	60
		B.E – Mechanical Engineering	60
		M.E – Embedded Systems	18
		M.Tech – Biotechnology	18
		MCA – Master of Computer Applications	60
		MBA – Master of Business Administration	60
8	2009-2010	B.E – Electronics and Communication Engineering	120
		B.E – Computer Science and Engineering	60
		B.Tech – Biotechnology	60
		B.E – Electrical and Electronics Engineering	60
		B.E – Biomedical Engineering	60
		B.E – Mechanical Engineering	60
		M.E – Embedded Systems	18
		M.Tech – Biotechnology	18
		MCA – Master of Computer Applications	60
		MBA – Master of Business Administration	60
9.	2010-2011	B.E – Electronics and Communication Engineering	120
		B.E – Computer Science and Engineering	60
		B.Tech – Biotechnology	60
		B.E – Electrical and Electronics Engineering	60
		B.E – Biomedical Engineering	60
		B.E – Mechanical Engineering	60
		M.E – Embedded Systems	18
		M.Tech – Biotechnology	18
		MCA – Master of Computer Applications	60
		MBA – Master of Business Administration	60
10.	2011-2012	B.E – Bio-Medical Engineering	60
		B.Tech – Bio-Technology	60
		B.E – Electrical and Electronics Engineering	60
		B.E – Electronics and Communication Engineering	120
		B.E – Computer science and Engineering	60
		B.E – Mechanical Engineering	120
		B.E- Civil Engineering	60
		M.E – Embedded Systems	18
		M.E – CAD / CAM	18
		M.E – Computer Science and Engineering	18
		M.E – Biomedical Engineering	18
		M.Tech – Biotechnology	18
		M.Tech – Nano Science and Technology	18
		MCA – Master of Computer Applications	60
MBA – Master of Business Administration	60		

11.	2012-2013	B.E – Biomedical Engineering	60
		B.Tech – Bio-Technology	60
		B.E – Electrical and Electronics Engineering	60
		B.E – Electronics and Communication Engineering	120
		B.E – Computer science and Engineering	60
		B.E – Mechanical Engineering	120
		B.E- Civil Engineering	60
		B.E- Aeronautical Engineering	60
		M.E – Embedded Systems	18
		M.E – CAD / CAM	18
		M.E – Computer Science and Engineering	18
		M.E – Biomedical Engineering	18
		M.E – Power Systems Engineering	18
		M.Tech – Biotechnology	18
		M.Tech – Nano Science and Technology	18
		MCA – Master of Computer Applications	60
		MBA – Master of Business Administration	60
12.	2013-2014	B.E – Biomedical Engineering	60
		B.Tech – Bio-Technology	60
		B.E – Electrical and Electronics Engineering	60
		B.E – Electronics and Communication Engineering	120
		B.E – Computer science and Engineering	60
		B.E – Mechanical Engineering	120
		B.E- Civil Engineering	60
		B.E- Aeronautical Engineering	60
		M.E – Embedded Systems	18
		M.E – CAD / CAM	18
		M.E – Computer Science and Engineering	18
		M.E – Biomedical Engineering	18
		M.E – Power Systems Engineering	18
		M.Tech – Biotechnology	18
		M.Tech – Nano Science and Technology	18
		MCA – Master of Computer Applications	60
		MBA – Master of Business Administration	60
13.	2014-2015	B.E – Biomedical Engineering	60
		B.Tech – Bio-Technology	60
		B.E – Electrical and Electronics Engineering	60
		B.E – Electronics and Communication Engineering	120
		B.E – Computer science and Engineering	60
		B.E – Mechanical Engineering	180
		B.E- Civil Engineering	120
		B.E- Aeronautical Engineering	60
		M.E – Embedded Systems	18
		M.E – CAD / CAM	18
		M.E – Computer Science and Engineering	18

	M.E – Biomedical Engineering	18
	M.E – Power Systems Engineering	18
	M.E – Communications Engineering	18
	M.E – Structural Engineering	18
	M.Tech – Biotechnology	18
	M.Tech – Nano Science and Technology	18
	MCA – Master of Computer Applications	60
	MBA – Master of Business Administration	60

- **Number of Students admitted under various categories in the last three years**

<b>Branch</b>	<b>Actual admissions 2014-15</b>	<b>Actual admissions 2013-14</b>	<b>Actual admissions 2012-13</b>
B.E - Bio-Medical Engineering	57	46	43
B.Tech - Biotechnology	12	12	16
B.E - Electrical and Electronics Engineering	14	22	28
B.E - Electronics and Communication Engineering	7	44	70
B.E - Computer Science and Engineering	11	21	21
B.E - Mechanical Engineering	65	141	105
B.E- Civil Engineering	27	51	58
B.E- Aeronautical Engineering	8	8	5
M.E - Embedded Systems	13	18	18
M.E – CAD / CAM	14	12	16
M.E – Computer Science and Engineering	18	18	18
M.E – Biomedical Engineering	9	9	18
M.E – Power Systems Engineering	10	18	18
M.E – Communication Engineering	8	-	-
M.E – Structural Engineering	18	-	-
M.Tech – Biotechnology	6	6	14
M.Tech – Nano Science and Technology	-	6	13
Master of Computer Applications	-	27	21
Master of Business Administration	34	17	51

- **Number of Applications Received During Last two years for admission under management Quota**

<b>Year</b>	<b>Applications received</b>
2014-2015	425
2013-2014	450

#### **X. ADMISSION PROCEDURE:**

As per Tamil Nadu Government Policy

#### **XV. INFORMATION ON INFRASTRUCTURE AND OTHER RESOURCES AVAILABLE**

- **Library**

<b>S. No</b>	<b>Course(s)</b>	<b>Number of titles of the books</b>	<b>Number of volumes</b>	<b>Journals</b>	
				<b>National</b>	<b>International</b>
1	B.E - Bio-Medical Engineering	638	2550	6	6
2	B.Tech - Bio-Technology	825	3300	6	6
3	B.E - Electrical and Electronics Engineering	675	2700	6	6
4	B.E - Electronics and Communication Engineering	1425	5700	6	12
5	B.E - Computer science and Engineering	600	2401	6	6
6	B.E - Mechanical Engineering	888	3550	8	10
7	B.E- Civil Engineering	306	1223	6	3
8	B.E- Aeronautical Engineering	200	800	6	3
9	M.E - Embedded Systems	212	850	6	4
10	M.E – CAD / CAM	162	650	6	4
11	M.E – Computer Science and Engineering	113	450	2	4
12	M.E – Biomedical Engineering	75	300	3	4
13	M.E – Power Systems Engineering	75	300	6	1
14	M.E – Communications Engineering	45	180	3	1

15	M.E – Structural Engineering	43	175	3	1
16	M.Tech – Biotechnology	175	700	2	5
17	M.Tech – Nano Science and Technology	125	500	4	6
18	Master of Computer Applications	1150	4600	6	6
19	Master of Business Administration	1025	4100	9	15
<b>Total</b>		<b>8757</b>	<b>35029</b>	<b>100</b>	<b>103</b>

- **E-Library facilities - Available**

**Chairman and Members of Governing Council:**

**Shri.A.Thirunavukarasu., IES**  
Chairman,  
General Manager, BSNL,  
BSNL, Nagercoil.

**Shri. C.Thayaparan, M.E**  
Member,  
Udaya School of Engineering,  
Udaya Nagar, Vellamodi.  
Kanyakumari District

**Smt.R.Amudha B.Sc**  
Managing Trustee,  
R.V.Educational Trust.  
Rajakkamangalam Post

**Shri.C.Selvamony, M.E**  
Special Officer,  
R.V. Educational Trust.

**Shri.Ramesh., M.Tech**  
Member,  
Scientist, ISRO.

**Dr.A.Manivannan., M.E., Ph.D**  
Member,  
Professor, .  
Dept. of Mechanical Engineering,  
Anna University College of Engineering.  
Tirunelveli.

**Dr.T.Christopher., M.E., Ph.D**  
Membe,  
Professor,  
Dept. of Mechanical Engineering.



Government College of Engineering,

**Shri.B.Barathan., M.E**

Member,  
Professor, Dept. of Civil Engg.,  
Kamaraj Polytechnic College, Pazhavilai,  
Erumbucad Post

**Dr.K.Mohan., M.Sc., M.Phil, M.Tech., Ph.D**

Member,  
Professor  
Udaya School of Engineering,  
Udaya Nagar, Vellamadi,  
Ammandivilai Post- 629 204.

**Mr.A.Zafrulla Khan., M.Sc., M.B.A**

Member,  
Professor,  
Udaya School of Engineering,  
Udaya Nagar, Vellamadi,  
Ammandivilai Post- 629 204

**Dr.T.Ashok Kumar., M.D**

Member,  
Professor & Head,  
Dept. of Pharmacology,  
Govt. Medical College Hospital, K.K. District

**Dr.C.Jeyachandran,**

**Principal**  
Udaya School of Engineering  
Udaya Nagar, Vellamadi

## DETAILS OF EXISTING FACULTY MEMBERS

Name of the Course	Sl. No.	Name (s) of the Teaching Faculty	Designation (Lecturer/ Asst. Professor/ Professor)	Qualifications with field of specialization with class / division of passing			Date of Birth	Experience (Years)			Date of Joining the Institution	Gross total salary as on date with scale & Basic pay
				UG	PG	Doctorate		a) Teaching	b) Industry	c) Research		
								a	b	c		
<b>ECE</b>	1.	Dr.C.Jeyachandran	Professor	B.E (EEE)	M.E (Process Control Instrumentation)	Ph.D (ECE)	20-05-1972	14.5	-	-	01-06-2012	37400+AGP 8700
	2.	Mrs.N.Vithya Lakshmi	Assistant Professor	B.E (ECE)	M.Tech (VLSI)	-	05-06-1972	11	1	1.4	16-01-2006	15600+AGP 7600
	3.	Mr.N.Satheesh Kumar	Assistant Professor	B.E (EEE)	M.E (A.E)	-	09-05-1981	12	1	-	01-12-2003	15600+AGP 5400
	4.	Mrs. R. Swornalatha	Assistant Professor	B.E (EIE)	M.Tech (CIT)	-	07-12-1980	7.6	-	-	01-05-2006	15600+AGP 5400
	5.	Mrs.T.Sunitha	Assistant Professor	B.E (ECE)	M.E Applied Electronics	-	25-05-1971	11.0	-	-	20-05-2009	15600+AGP 5400
	6.	Mr.K.E.Sajeev Jeba King	Assistant Professor	B.E (EEE)	M.E (Applied Electronics)	-	30-09-1981	6.7	-	-	21-05-2007	15600+AGP 5400
	7.	Ms.B.Chithra	Assistant Professor	B.E (ECE)	M.E (Applied Electronics)	-	14-04-1983	6.7	-	-	21-05-2007	15600+AGP 5400
	8.	Ms.S.B.Thanga Malar	Assistant Professor	B.E (ECE)	M.E (Applied Electronics)	-	09-01-1984	6.7	-	-	21-05-2007	15600+AGP 5400
	9.	Ms. B. R. Uma Devi	Assistant Professor	B.E (ECE)	M.E (Communication System)	-	07-05-1985	6.0	-	-	03-01-2008	15600+AGP 5400
	10.	Mrs. C. Pratheeba	Assistant Professor	B.E (ECE)	M.E Communication Systems	-	11-10-1981	5.7	-	-	09-06-2008	15600+AGP 5400
	11.	Ms.J.T.Jenila Moses	Assistant Professor	B.E (ECE)	M.E Applied Electronics	-	05-09-1985	3.0	-	-	22-06-2009	15600+AGP 5400
	12.	Mr.Mohan Kumar	Assistant Professor	B.E E&I	M.E Applied Electronics	-	26-04-1983	4.6	-	-	01-06-2009	15600+AGP 5400
	13.	Ms.J.Hinduja	Assistant Professor	B.E (ECE)	M.E CSE	-	16-10-1986	4.7	-	-	01-06-2009	15600+AGP 5400
	14.	Mr.Bibin Bose	Assistant Professor	B.E (ECE)	M.E Embedded System Technology	-	24-05-1985	4.6	-	-	23-06-2009	15600+AGP 5400

	15.	Mrs.C.S.Aruna	Assistant Professor	B.E (ECE)	M.E ( Applied Electronics )	-	01-06-1984	3.7	-	-	01-06-2010	15600+AGP 5400
	16.	Mr.J.Jaya Lalin	Assistant Professor	B.E (ECE)	M.E ( Applied Electronics )	-	25-09-1987	2.0	-	-	05-01-2012	15600+AGP 5400
	17.	Ms. Y.Jebitha	Assistant Professor	B.E (ECE)	M.E ( EST )	-	27-07-1989	1.6	-	-	23-07-2012	15600+AGP 5400
	18.	Ms. V.Viji	Assistant Professor	B.E (ECE)	M.E (Communication Systems )	-	07-05-1989	1.1	-	-	04-02-2013	15600+AGP 5400
	19.	Mr.L.Karthick Vijaya Raja	Assistant Professor	B.E (ECE)	M.E (C & I )	-	21-01-1986	1.1	-	-	04-02-2013	15600+AGP 5400
	20.	Ms.L.Bensha	Assistant Professor	B.E (ECE)	M.E (CSE)	-	25-07-1990	0.10	-	-	04-07-2013	15600+AGP 5400
<b>EEE</b>	1.	Dr. J. Mahil	Professor	B.E EEE	M.E Process Control & Instrumentation	Ph.D (EEE)	20-07-1980	8.5	-	-	02-06-2008	37400+AGP 8700
	2.	Mrs.Antony Freeda Rani	Assistant Professor	B.E (EEE)	ME (C &I)	-	02-03-1978	12.5	-	-	01-08-2005	15600+AGP 5400
	3.	Mrs.R.Senthil Rama	Assistant Professor	B.E (EEE)	M.Tech (PED)	-	11-06-1980	10.4	-	-	01-10-2003	15600+AGP 5400
	4.	Mr.N.Calvin Jeba Rufus	Assistant Professor	B.E (EEE)	M.E (PS)	-	22-02-1977	7.7	-	-	05-07-2006	15600+AGP 5400
	5.	Mr. T.Rajesh	Assistant Professor	B.E (EEE)	M.E Power Electronics & Drives	-	23-03-1974	5.5	-	-	18-08-2008	15600+AGP 5400
	6.	Mr. V. Ponselvan	Assistant Professor	B.E (EEE)	M.E (Applied Electronics)	-	08-09-1985	4.5	-	-	24-08-2009	15600+AGP 5400
	7.	Mr.M.L.John Paul	Assistant Professor	B.E (EEE)	M.E (C&IE)	-	13-07-1986	4.0	-	-	16-07-2010	15600+AGP 5400
	8.	Mr.J.Nixon	Assistant Professor	B.E (EEE)	M.E ( Communication Systems )	-	20-06-1985	2.1	-	-	04-02-2013	15600+AGP 5400
	9.	Mrs.R.Shiba	Assistant Professor	B.E (EEE)	M.E ( Communication Systems )	-	18-02-1988	1.9	-	-	30-08-2012	15600+AGP 5400
	10.	Mr.R.Selvalingam	Assistant Professor	B.E (EEE)	M.E (Power Sys. Engg )	-	10-04-1986	0.10	-	-	01-07-2013	15600+AGP 5400

	11.	Mr.B.Sujil	Pro-Term Lecturer	B.E (EEE)	-	-	27-03-1987	-	-	-	02-07-2014	8000-275-13,500
<b>BM</b>	1	Mr.N.Herald Anantha Rufus	Assistant Professor	B.E (ECE)	M.E (DCN)	-	30-07-1979	11.6	-	-	06-01-2003	15600+AGP 5400
	2	Mr.N.Lekshmanan	Assistant Professor	B.E (EEE)	ME (PCI)	-	03-06-1971	8.9	-	-	15-12-2004	15600+AGP 5400
	3	Mr.J. Sam Alaric	Assistant Professor	B.E (EEE)	ME (PCI)	-	29-06-1976	10.8	-	-	16-01-2006	15600+AGP 5400
	4	Mr.D.Sunderlin Shibu	Assistant Professor	B.E (BM)	M.E (Applied Electronics)	-	20-10-1987	2.9	-	-	15-06-2011	15600+AGP 5400
	5	Ms.S.S.Divya	Assistant Professor	B.E (BM)	M.Tech (NST)	-	05-06-1988	2.7	-	-	05-07-2011	15600+AGP 5400
	6	Ms.M.U.Veena	Assistant Professor	B.E (BM)	M.E (BM)	-	17-04-1988	2.7	-	-	08-07-2011	15600+AGP 5400
	7	Mrs.S.Jebila	Assistant Professor	B.Sc (Botany)	M.Sc(BT) M.Tech (BT)	-	27-07-1986	2.7	-	-	08-07-2011	15600+AGP 5400
	8	Ms.D.Antonio Thapeetha	Assistant Professor	B.E (BM)	M.E (Biomedical Instrumentation)	-	13-06-1988	1.4	-	-	15-09-2012	15600+AGP 5400
	9	Mr.D.Eldin Henry Shboffee	Assistant Professor	B.E (BM)	M.E (Biomedical Instrumentation)	-	02-06-1990	0.9	-	-	01-07-2013	15600+AGP 5400
	10	Ms.H.S.Anuja	Assistant Professor	B.E (BM)	M.E (Applied Electronics)	-	01-05-1989	0.9	-	-	17-07-2013	15600+AGP 5400
	11	Mr.S.Rajesh Kumar Reddy	Assistant Professor	B.Tech (BM)	M.Tech (Medical Instrumentation )	-	05-12-1989	0.8	-	-	01-08-2013	15600+AGP 5400
	12	Mrs.S.Sebija	Assistant Professor	B.E (ECE)	M.E ( Applied Electronics )	-	17-05-1989	0.4	-	-	02-01-2014	15600+AGP 5400
<b>BT</b>	1	Dr.A.Renu	Associate Professor	B.Sc (Zoology)	M.Sc	Ph.D (Biology)	03-06-1974	8.0	3.6	-	28-06-2005	15600+AGP 5400
	2	Mrs. T. P.Sutha	Assistant Professor	B.Sc Zoology	M.Sc Zoology M.Phil	Ph.D Biotechnology	27-07-1973	9.7	-	-	15-07-2004	15600+AGP 5400
	3	Mrs.C.Angel Rose Sary	Assistant Professor	B.Tech (Chemical)	M.Tech (Biotech)	-	28-02-1983	9.8	-	-	01-07-2005	15600+AGP 5400
	4	Mrs.L.R.Monisha Miriam	Assistant Professor	B.Tech Bio-Tech	M.Tech Bio-Tech	-	14-08-1986	6.8	-	-	21-05-2007	15600+AGP 5400

	5	Ms.D.Devina Merin	Assistant Professor	B.Tech Bio-Tech	M.Tech Bio-Tech	-	10-04-1984	3.6	-	-	01-07-2010	15600+AGP 5400	
	6	Mr.N.Edison	Assistant Professor	B.Tech Bio-Tech	M.Tech Bio-Tech	-	07-01-1987	3.0	-	-	10-01-2011	15600+AGP 5400	
	7	Mr.G.Balamurugan	Assistant Professor	B.Tech Bio-Tech	M.Tech Bio-Tech	-	01-07-1989	1.6	-	-	12-07-2012	15600+AGP 5400	
	8	Ms.E.R.Jisha	Assistant Professor	B.Tech Bio-Tech	M.Tech Bio-Tech	-	21-03-1988	1.6	-	-	13-07-2012	15600+AGP 5400	
	9	Dr.P.Blessed Benitin	Assistant Professor	B.Sc Zoology	M.Sc, M.Phil BT	Ph.D	10-05-1982	0.7	-	-	01-07-2014	15600+AGP 5400	
	10	Mrs.Rinaldin Aroma	Assistant Professor	B.Sc Zoology	M.Sc, M.Phil BT	-	23-04-1987	0.7	-	-	02-07-2014	15600+AGP 5400	
	11	Ms.A.A.Vidhya	Assistant Professor	B.Sc Zoology	M.Sc, M.Phil BT	-	07-09-1987	0.7	-	-	02-07-2014	15600+AGP 5400	
	12	Mrs.T.Sahaya Abila Heleena	Assistant Professor	B.Sc Botany	M.Sc, M.Phil BT	-	09-06-1984	0.5	-	-	24-09-2014	15600+AGP 5400	
	<b>CSE</b>	1	Mr.Vasantha kumar	Assistant Professor	B.E (CSE)	M.E (CSE)	-	28-10-1982	5.5	2.0	-	18.08.2008	15600+AGP 5400
		2	Ms.Jamelia	Assistant Professor	B.E (CSE)	M.Tech (CSE)	-	26-07-1978	9.8	-	-	09.06.2008	15600+AGP 5400
		3	Mrs.S.Josephin Liza	Assistant Professor	B.E (CSE)	M.E (CSE)	-	18-02-1981	9.8	-	-	03.01.2007	15600+AGP 5400
		4	Ms.C.Britha	Assistant Professor	B.Tech (IT)	M.E (CSE)	-	08-03-1986	4.6	-	-	01-07-2009	15600+AGP 5400
5		Mr.U.Mahesh	Assistant Professor	B.E (CSE)	M.E (CSE)	-	19-03-1986	1.6	-	-	05-07-2012	15600+AGP 5400	
6		Ms.J.S.Anitha	Assistant Professor	B.Tech (IT)	M.E (CSE)	-	16-08-1989	1.5	-	-	01-08-2012	15600+AGP 5400	
7		Mr.A.Chenthil Thatteekan	Assistant Professor	B.E (CSE)	M.E (CSE)	-	16-07-1980	2.6	-	-	15-07-2011	15600+AGP 5400	
8		Ms.P.Bency Paul	Assistant Professor	B.E (CSE)	M.E (CSE)	-	17-11-1988	1.1	-	-	04-02-2013	15600+AGP 5400	
9		Mrs.B.T.Pon Mahzil	Assistant Professor	B.E (CSE)	M.E (CSE)	-	16-12-1986	3.0	-	-	01-06-2011	15600+AGP 5400	
10		Ms.S.U.Sajeela	Assistant Professor	B.E (CSE)	M.E (CSE)	-	25-05-1987	3.0	-	-	01-06-2011	15600+AGP 5400	
11		Ms.T.Escalin Freetha	Assistant Professor	B.E (CSE)	M.Tech (C & IT)	-	28-03-1985	3.2	-	-	01-06-2011	15600+AGP 5400	

	12	Mr.M.B.Jerrysmith	Assistant Professor	B.E (CSE)	M.Tech (C & IT)	-	09-06-1986	3.2	-	-	01-06-2011	15600+AGP 5400
<b>Mechanical</b>	1	Dr.S.Sundaram	Professor	B.E (Mechanical)	M.E (M/c Tool Engineering)	Ph.D (Manufacturing Engineering)	04-06-1952	34.7	-	-	01-07-2013	37400+AGP 8700
	2	Mr.K.Hari Ram	Assistant Professor	B.E (Mechanical)	M.E (Thermal)	Ph.D	09-06-1977	12.7	-	-	05-07-2006	15600+AGP 5400
	3	Mr.T.Elango	Assistant Professor	B.E (Mechanical)	M.E (Manufacturing)	-	01-06-1976	7.5	5.0	-	01-08-2006	15600+AGP 5400
	4	Mr.M.Siva Prakash	Assistant Professor	B.E (Mechanical)	M.E (CAD)	-	24-04-1976	4.7	-	-	01-06-2009	15600+AGP 5400
	5	Mr.C.Jaya Sekar	Assistant Professor	B.E (Mechanical)	M.E (CAD/CAM )	-	15-05-1977	1.6	-	-	21-07-2012	15600+AGP 5400
	6	Mr.R.Ratheesh	Assistant Professor	B.E (Mechanical)	M.E (CAD/CAM )	-	18-07-1989	0.10	-	-	01-07-2013	15600+AGP 5400
	7	Mr.C.Dhinesh Kumar	Assistant Professor	B.E (Mechanical)	M.E (CAD/CAM )	-	03-05-1987	0.10	-	-	01-07-2013	15600+AGP 5400
	8	Mr.G.Michael Jose	Assistant Professor	B.E (Mechanical)	M.E (CAD/CAM )	-	03-07-1987	0.10	-	-	01-07-2013	15600+AGP 5400
	9	Mr.C.Pratheeban	Assistant Professor	B.E (Mechanical)	M.E (CAD/CAM )	-	04-06-1989	0.10	-	-	01-07-2013	15600+AGP 5400
	10	Mr.S.Sreejan	Assistant Professor	B.E (Mechanical)	M.E (Manufacturing Engineering)	-	31-05-1985	0.10	-	-	16-07-2013	15600+AGP 5400
	11	Mr.K.Murugan	Assistant Professor	B.E (Mechanical)	M.E (CAD/CAM )	-	26-05-1976	-	-	-	07-05-2013	15600+AGP 5400
	12	Mr.C.Sivaraj	Assistant Professor	B.E (Mechanical)	M.E (CAD/CAM )	-	07-08-1987	0.9	-	-	07-05-2014	15600+AGP 5400
	13	Mr. P. Satheesh	Assistant Professor	B.E (Mechanical)	M.E (CAD/CAM )	-	5-06-1988	-	-	-	07-05-2013	15600+AGP 5400
	14	Mr.D.Vinoth Kumar	Assistant Professor	B.E (Mechanical)	M.E (CAD/CAM )	-	27-03-1985	0.7	-	-	02-07-2014	15600+AGP 5400
	15	Mr.A.Sobanan	Assistant Professor	B.E (Mechanical)	M.E (CAD/CAM )	-	07-05-1988	0.7	-	-	02-07-2014	15600+AGP 5400
	16	Mr.N.Mohana Sundaram	Assistant Professor	B.E (Mechanical)	M.E (CAD/CAM )	-	05-06-1970	8.0	-	-	02-07-2014	15600+AGP 5400
	17	Mr.T.Appaswamy	Assistant Professor	B.E (Mechanical)	M.E (CAD/CAM )	-	22-05-1974	-	-	-	07-05-2013	15600+AGP 5400
18	Mr.T.Selvaraj	Assistant Professor	B.E (Mechanical)	M.E (CAD/CAM )	-	03-06-1980	-	-	-	07-05-2013	15600+AGP 5400	

	19	Mr.C.Pradeep	Assistant Professor	B.E (Mechanical)	-	-	24-11-1990	0.2	-	-	31-12-2014	8000-275-13500
	20	Mr.Ajish.A	Pro-Term Lecturer	B.E (Mechanical)	-	-	08-01-1991	0.2	-	-	31-12-2014	8000-275-13500
	21	Mr.Arun.V	Pro-Term Lecturer	B.E (Mechanical)	-	-	18-05-1992	0.2	-	-	31-12-2014	8000-275-13500
	22	Mr.Arun.S.J	Pro-Term Lecturer	B.E (Mechanical)	-	-	19-05-1992	0.2	-	-	31-12-2014	8000-275-13500
	23	Mr.Velrajan.T	Pro-Term Lecturer	B.E (Mechanical)	-	-	05-07-1984	0.2	-	-	31-12-2014	8000-275-13500
	24	Mr.Stephen.G.I	Pro-Term Lecturer	B.E (Mechanical)	-	-	01-06-1992	0.2	-	-	31-12-2014	8000-275-13500
	25	Mr.Thangakrishnan.S	Pro-Term Lecturer	B.E (Mechanical)	-	-	06-04-1986	0.2	-	-	31-12-2014	8000-275-13500
Aero	1	Mr.P.Ramesh	Assistant Professor	B.E (Aeronautical)	M.E (CAD/CAM )	-	01-05-1989	0.11	-	-	01-07-2013	15600+AGP 5400
	2	Mr.J.Jagan Ramdhas	Assistant Professor	B.E (Mechanical)	M.E (Thermal Engg )	-	13-04-1977	2.5	-	-	01-02-2012	15600+AGP 5400
	3	Mr.R.K.Nivendran	Assistant Professor	B.E (Aeronautical)	M.E (CAD/CAM )	-	05-06-1990	0.7	-	-	07-05-2014	15600+AGP 5400
	4	Mr.Jenit S.Barnabas	Assistant Professor	B.E (Aeronautical)	M.E (CAD/CAM )	-	20-01-1989	0.7	-	-	07-05-2014	15600+AGP 5400
	5	Mr.G.Satheesh Kumar	Assistant Professor	B.E (Aeronautical)	M.E (CAD/CAM )	-	15-06-1987	0.7	-	-	07-05-2014	15600+AGP 5400
	6	Mr.Ginu	Assistant Professor	B.E (Aeronautical)	M.E (CAD/CAM )	-	01-05-1988	0.7	-	-	07-05-2014	15600+AGP 5400
	7	Ms.K.Christal	Pro-Term Lecturer	B.E (Aeronautical)	-	-	20-10-1991	-	-	-	07-05-2014	8000-275-13500
	8	Mr.Albert.C	Pro-Term Lecturer	B.E (Aeronautical)	-	-	09-03-1990	0.2	-	-	31-12-2014	8000-275-13500
	9	Ms.Sabatini.A	Pro-Term Lecturer	B.E (Aeronautical)	-	-	24-04-1992	0.2	-	-	31-12-2014	8000-275-13500
	10	Mr.Ramesh.R	Pro-Term Lecturer	B.E (Aeronautical)	-	-	04-04-1991	0.2	-	-	31-12-2014	8000-275-13500
	11	Mr.Vijayan.M	Pro-Term Lecturer	B.E (Aeronautical)	-	-	08-10-1990	0.2	-	-	31-12-2014	8000-275-13500
Civil	1	Dr.N.V.Neelakandhan	Professor	B.E (Civil)	M.E (Structural Engineering)	Ph.D	30-07-1962	12.0	-	-	07-05-2014	37400+AGP 8700

	2	Mr.S.B.Aravind	Assistant Professor	B.E (Civil)	M.E (Structural Engineering)	-	02-06-1988	0.10	-	-	12-08-2013	15600+AGP 5400
	3	Mr.K.Mahesh Kumar	Assistant Professor	B.E (Civil)	M.E (Construction Engg.Mgt)	-	25-04-1986	0.7	-	-	02-07-2014	15600+AGP 5400
	4	Mr.P.S.Sathish Saravanan	Assistant Professor	B.E (Civil)	M.E (Construction Engg.Mgt)	-	15-11-1975	1.5	-	-	01-12-2014	15600+AGP 5400
	5	Ms.M.Ajitha	Pro-Term Lecturer	B.E (Civil)	-	-	10-04-1990	0.10	-	-	04-07-2013	8000-275-13500
	6	Ms.S.Sindhu	Pro-Term Lecturer	B.E (Civil)	-	-	28-11-1985	0.9	-	-	07-05-2014	8000-275-13500
	7	Mr.Maria Praveen.G	Pro-Term Lecturer	B.E (Civil)	-	-	03-03-1993	0.2	-	-	31-12-2014	8000-275-13500
	8	Mr.Venu.T	Pro-Term Lecturer	B.E (Civil)	-	-	19-04-1972	0.2	-	-	31-12-2014	8000-275-13500
	9	Mr.Sutheer.S	Pro-Term Lecturer	B.E (Civil)	-	-	14-11-1991	0.2	-	-	31-12-2014	8000-275-13500
	10	Mr.Abijith.S	Pro-Term Lecturer	B.E (Civil)	-	-	02-07-1992	0.2	-	-	31-12-2014	8000-275-13500
	11	Mr.Manikandan.S	Pro-Term Lecturer	B.E (Civil)	-	-	24-10-1992	0.2	-	-	31-12-2014	8000-275-13500
	12	Mr.Arumugam.A.K	Pro-Term Lecturer	B.E (Civil)	-	-	23-03-1993	0.2	-	-	31-12-2014	8000-275-13500
	13	Mr.Sri Rengan.S.R	Pro-Term Lecturer	B.E (Civil)	-	-	10-05-1992	0.2	-	-	31-12-2014	8000-275-13500
<b>Humanities &amp; Sciences</b>	1.	Mrs.S.Santha Kumari	Assistant Professor	B.Sc (Maths)	M.Sc., (Maths) M.Phil	Ph.D	08-05-1975	14.7	-	-	04-06-2003	15600+AGP 5400
	2.	Mr.T.Tharmaraj	Assistant Professor	B.Sc (Maths)	M.Sc., (Maths) M.Phil	Ph.D	15-01-1977	12.0	-	-	01-08-2002	15600+AGP 5400
	3.	Dr.N.S.Mathu Suresh	Asso. Prof.	B.Sc (Maths)	M.Sc., (Maths) M.Phil, M.Ed	Ph.D	31-05-1969	18.1	-	-	20-07-2005	15600+AGP 7600
	4.	Mrs. T Priya Viji	Assistant Professor	B.Sc (Maths)	M.Sc M.Phil (Maths)	-	15-07-1979	5.5	-	-	10-07-2008	15600+AGP 5400



5.	Ms.T.Sindhuja	Assistant Professor	B.Sc (Maths)	M.Sc M.Phil (Maths)	-	26-02-1986	4.5	-	-	10-08-2009	15600+AGP 5400
6.	Mrs.C.Suni	Assistant Professor	B.Sc (Maths)	M.Sc (Maths)	-	10-05-1985	4.6	-	-	23-07-2008	15600+AGP 5400
7.	Mr.M.Muthu Bala Subramaniam	Assistant Professor	B.Sc (Maths)	M.Sc (Maths)	Ph.D	26-05-1982	8.0	-	-	30-04-2012	15600+AGP 5400
8.	Ms.T.Monisha	Assistant Professor	B.Sc (Maths)	M.Sc (Maths)	-	27-05-1987	1.5	-	-	30-08-2012	15600+AGP 5400
9.	Mrs.N.Soumya	Assistant Professor	B.Sc (Maths)	M.Sc (Maths)	-	07-06-1981	1.4	-	-	12-09-2012	15600+AGP 5400
10.	Mrs.H.Subha	Assistant Professor	B.Sc (Maths)	M.Sc (Maths)	-	01-06-1982	0.9	-	-	02-09-2013	15600+AGP 5400
11.	Mr.J.Benefit Jose	Assistant Professor	B.Sc (Maths)	M.Sc (Maths)	-	05-07-1980	0.9	-	-	02-09-2013	15600+AGP 5400
12.	Mr.M.A.Zafrullah Khan	Professor	B.Sc (Physics)	M.Sc (Physics) M.B.A	-	04-05-1963	27.0	-	-	02-09-2004	15600+AGP 5400
13.	Mr.K.C.Vinoth Kumar	Assistant Professor	B.Sc (Physics)	M.Sc., (Physics) (M.Phil)	-	16-01-1973	13.0	-	-	23-07-2002	15600+AGP 5400
14.	Dr.J.V.Libija	Asso. Prof.	B.Sc (Physics)	M.Sc (Physics)	Ph.D	17-02-1979	8.5	-	-	20-07-2005	15600+AGP 7600
15.	Mrs.P.Sivakala	Assistant Professor	B.Sc (Physics)	M.Sc., (Physics) (M.Phil)	-	04-04-1978	8.0	-	-	20-07-2005	15600+AGP 5400
16.	Mrs.V.Benaline Sheeba	Assistant Professor	B.Sc. (Physics) B.Ed	M.Sc., (Physics) M.Phil	-	03-06-1979	7.5	-	-	24-08-2006	15600+AGP 5400
17.	Mrs.A.M.Alice Margret	Assistant Professor	B.Sc., (Chemistry) B.Ed	M.Sc., (Chemistry) M.Phil, M.Ed	-	31-07-1971	15.2	-	-	23-07-2002	15600+AGP 5400
18.	Mrs.T.Jani Subha	Assistant Professor	B.Sc., (Chemistry) B.Ed	M.Sc., (Chemistry) (M.Phil)	-	04-03-1979	11.5	-	-	23-07-2002	15600+AGP 5400
19.	Mr.K.Sri Krishna Ramesh	Assistant Professor	B.Sc Chemistry	M.Sc Chemistry M.Phil Chemistry	-	25-07-1984	4.0	-	-	21-01-2009	15600+AGP 5400

20.	Mr.S.Suyambu Lingam	Assistant Professor	B.Sc Chemistry	M.Sc Chemistry M.Phil Chemistry	-	09-06-1982	5.3	-	-	01-07-2011	15600+AGP 5400
21.	Mrs.S.Sreekala	Assistant Professor	B.Sc Chemistry	M.Sc Chemistry M.Phil Chemistry	Ph.D	11-04-1970	2.4	-	-	06-09-2011	15600+AGP 5400
22.	Mrs.J.Nirmala	Assistant Professor	B.Sc Chemistry	M.Sc Chemistry M.Phil Chemistry	-	06-04-1979	6.9	-	-	22-08-2013	15600+AGP 5400
23.	Mrs.R.Ahila	Assistant Professor	B.Sc Chemistry	M.Sc Chemistry M.Phil Chemistry	-	02-07-1988	0.9	-	-	08-08-2013	15600+AGP 5400
24.	Mrs.S.Rema Devi	Assistant Professor	B.A (English)	M.A., (English) (M.Phil)	-	03-12-1981	8.5	-	-	01-08-2005	15600+AGP 5400
25.	Mrs.S.Lekshmi Devi	Assistant Professor	B.A (English)	M.A., (English) (M.Phil)	-	31-05-1967	10.0	-	-	07-02-2011	15600+AGP 5400
26.	Ms.M.Ajantha	Assistant Professor	B.A (English)	M.A., (English) (M.Phil)	-	04-05-1989	2.6	-	-	18-07-2011	15600+AGP 5400
27.	Mrs.G.Brindha	Assistant Professor	B.A (English)	M.A., (English) (M.Phil)	-	16-11-1984	3.5	-	-	03-02-2011	15600+AGP 5400
28.	Mr.C.Samuvel	Assistant Professor	B.E (CSE)	M.E (CSE)	-	25-05-1982	4.4	-	-	07-09-2009	15600+AGP 5400
29.	Mrs.S.Palanithangam	Assistant Professor	B.E (CSE)	M.Tech (C & IT)	-	27-10-1980	3.0	-	-	20-07-2011	15600+AGP 5400
30.	Ms.J.S.Sonia	Assistant Professor	B.Tech (IT)	M.Tech (C & IT)	-	21-05-1984	2.6	-	-	20-07-2011	15600+AGP 5400
31.	Mr.G.Vijay	Assistant Professor	B.E (CSE)	M.E (Mobile and Pursuing Computing)	-	29-05-1985	1.5	-	-	21-08-2012	15600+AGP 5400
32.	Ms.V.L.Anusha Mol	Assistant Professor	B.E (CSE)	M.Tech (C & IT)	-	03-11-1988	1.4	-	-	20-09-2012	15600+AGP 5400
33.	Mr.Jarwin Yesudian.S	Assistant Professor	B.Tech (IT)	M.Tech (Soft. Engg.)	-	14-06-1987	1.1	-	-	26-12-2012	15600+AGP 5400

	34.	Mr.N.Arun Venkadesh	Assistant Professor	B.E (CSE)	M.E (CSE)	-	8-05-1984	2.2	-	-	14-03-2012	15600+AGP 5400
	35.	Mrs.C.M.Ginoshia	Assistant Professor	B.Tech (IT)	M.Tech (IT.)	-	17-10-1988	0.9	-	-	07-08-2013	15600+AGP 5400
	36.	Ms.S.R.Jeni	Assistant Professor	B.E (CSE)	M.E (CSE)	-	28-12-1989	0.9	-	-	12-08-2013	15600+AGP 5400
	37.	Mrs.C.Thinkal Dayana	Assistant Professor	BCA	MCA, M.E (Soft. Engg)	-	15-05-1983	1.4	-	-	03-01-2013	15600+AGP 5400
	38.	Mrs.P.Priya	Assistant Professor	BCA	MCA, M.E (Soft. Engg)	-	01-03-1977	2.10	-	-	02-07-2012	15600+AGP 5400
	39.	Mr.L.Panneer Dhas	Assistant Professor	B.Sc (CS)	M.Sc(CS) M.Phil(CS) M.Tech(C&IT)	-	21-07-1976	6.5	-	-	20-08-2008	15600+AGP 5400
	40.	Mr.J.Jerin Moses	Assistant Professor	-	M.Sc(SE) M.Phil(CS) M.Tech(C&IT)	-	17-01-1984	6.9	-	-	09-06-2008	15600+AGP 5400
	41.	Mr.H.Hari Gopal	Assistant Professor	B.Tech (IT)	-	-	18-07-1985	4.7	-	-	12-07-2010	15600+AGP 5400
	42.	Mrs.R.Girubha	Assistant Professor	B.E (CSE)	-	-	09-05-1990	2.5	-	-	03-10-2012	15600+AGP 5400
	43.	Mrs.A.V.Shahila Selva Kumari	Assistant Professor	BLIS	MLIS., M.Phil	-	12-07-1971	3.7	-	-	07-06-2010	15600+AGP 5400
<b>M.E</b> Embedded systems	1	Dr.B.Jeyachandran	Professor	B.E (ECE)	M.E (Applied Electronics)	Ph.D (Image Processing)	15-03-1980	11.0	.	.	08-07-2013	37400+AGP 8700
	2	Mrs. P. Renuka	Assistant Professor	B.E (ECE)	M.E (Applied Electronics)	-	24-11-1978	10.0	-	-	20-06-2007	15600+AGP 5400
	3	Ms.R.Scinthya	Assistant Professor	B.E (ECE)	M.E (EST)	-	24-06-1990	0.10	-	-	01-07-2013	15600+AGP 5400
<b>M.E</b> Communication Engineering	1	Dr.C.Ramesh	Professor	B.E (ECE)	M.E (Advanced Comm.Sys)	Ph.D Information Comm.Engg	20-06-1975	9.5	-	-	07-05-2014	37400+AGP 8700
	2	Mr.B.Udayakumar	Assistant Professor	B.E (CSE)	M.E (VLSI Desighn)	-	06-02-1989	0.9	-	-	12-03-2014	15600+AGP 5400
	3	Mrs.A.C.Revathi	Assistant Professor	B.E (ECE)	M.E (VLSI Desighn)	-	10-07-1985	7	-	-	15-12-2008	15600+AGP 5400

<b>M.E</b> Power System Engineering	1	Dr.T.Saravanan	Professor	B.E (ECE)	M.E (PC&I)	Ph.D (Embedded Power Electronics)	02-05-1977	11.0	-	-	01-06-2013	37400+AGP 8700
	2	Ms.R.Ithaya	Assistant Professor	B.E (EEE)	M.E (Applied Electronics)	-	05-05-1988	3.0	-	-	02-01-2011	15600+AGP 5400
	3	Ms.G.Sukanya	Assistant Professor	B.E (EEE)	M.E (Power Systems Engg.)	-	01-02-1988	1.0	-	-	27-01-2013	15600+AGP 5400
<b>M.E</b> Biomedical Engineering	1	Dr.J.Surendiran	Professor	B.E (ECE)	M.E (Power Electronics & Drives)	Ph.D (Image Processing )	21-08-1981	9.7	-	-	19-06-2013	37400+AGP 8700
	2	Mr.C.Bala Krishnan	Assistant Professor	B.E (BM)	M.Tech (BM)	-	19-01-1988	4.9	-	-	08-06-2009	15600+AGP 5400
	3	Mr.D.Ajith Kumar	Assistant Professor	B.E (BM)	M.E (Nano Sciecn & Technology)	-	18-06-1986	1.1	-	-	06-02-2013	15600+AGP 5400
<b>M.E</b> Structural Engineering	1	Dr.M.Arumugam	Professor	B.E (Civil)	M.E (Civil Engineering )	Ph.D Elevation of Transportation System Management Technology	17-03-1950	26.0	-	-	07-05-2014	37400+AGP 8700
	2	Mrs.D.Sheeba	Assistant Professor	B.E (Civil)	M.E (Structural Engineering)	-	17-05-1987	0.7	-	-	02-07-2014	15600+AGP 5400
	3	Mrs.Sumi Bell Sutha	Assistant Professor	B.E (Civil)	M.E (Structural Engineering)	-	31-07-1980	0.7	-	-	02-07-2014	15600+AGP 5400
<b>M.Tech</b> Biotech	1	Dr. K.Mohan	Professor	B.Sc (Zoology)	M.Sc M.Tech (Biotech)	Ph.D (Agri. BT)	12-06-1968	17.6	0.6	5.0	15-05-2006	37400+AGP 8700
	2	Dr.S. Viveka	Associate Professor	B.Sc (Zoology)	M.Sc M.Tech (Biotech)	Ph.D (Envi. & Science & Engg)	15-05-1975	12.6	-	5.0	16-06-2005	15600+AGP 5400
	3	Mrs.Ezhil Shnow Mary	Assistant Professor	B.Tech (BT)	M.Tech (BT)	-	30-06-1985	1.6	-	-	02-09-2013	15600+AGP 5400
<b>M.Tech</b> Nano Science and Technology	1	Dr.M.Sukumaran	Professor	B.Sc (Botany)	M.Sc (Botany)	Ph.D (Microbi ology)	29-10-1951	37.0			15-08-2010	37400+AGP 8700
	2	Mr.C.Santhaseelan	Assistant Professor	B.Tech (BT)	M.Tech (NST)	-	03-06-1987	2.3	-	-	04-10-2011	15600+AGP 5400

<b>M.E</b> Computer Science and Engineering	1	Dr.C.Suresh Kumar	Professor	B.E. (CSE)	M.E (CSE)	Ph.D (Information Comm.)	16-05-1977	13.5	-	-	22-11-2012	37400+AGP 8700
	2	Ms.T.Mary Daphne	Assistant Professor	B.E (CSE)	M.E (CSE)	-	21-02-1981	7.1	-	-	01-02-2006	15600+AGP 5400
	3	Mrs.D.K.Kalaivani	Assistant Professor	B.E. (EEE)	M.E (CSE)	-	12-02-1980	5.11	-	-	01-06-2009	15600+AGP 5400
<b>M.E</b> CAD / CAM	1	Dr.Raju Ramakrishnan	Professor	B.E (Mech.)	M.E (CAD/CAM)	Ph.D	07/06/1968	9.0	-	-	07-05-2014	37400+AGP 8700
	2	Mr.S.Saravanan	Assistant Professor	B.E (Mech.)	M.E (CAD/CAM)	-	05-07-1985	1.0	-	-	01-06-2013	15600+AGP 5400
	3	Mr.G.Ramamoorthi	Assistant Professor	B.E (Mech.)	M.E (CAD/CAM)	-	12-05-1990	0.7	-	-	05-07-2014	15600+AGP 5400
<b>M.C.A</b>	1.	Mrs.J.Shelina Jhansi	Assistant Professor	B.Sc	M. C.A Computer Application	-	21-07-1975	13.0	-	-	18-12-2006	15600+AGP 5400
	2.	Mr.A.Stanly	Assistant Professor	B.Sc	M. C.A Computer Application	-	14-07-1968	7.4	-	-	04-08-2006	15600+AGP 5400
	3.	Mrs.A.Prema Kala	Assistant Professor	B.Sc	M. C.A Computer Application	-	03-03-1975	10.1	-	-	22-08-2006	15600+AGP 5400
	4.	Mrs. S. A. Grace Latha	Assistant Professor	B.Sc Physics	MCA Computer Application	-	08-06-1975	6.4	-	-	07-09-2007	15600+AGP 5400
	5.	Ms. S. Wilwin Vanaja	Assistant Professor	B.Sc Physics	M.C.A Computer Application M.Tech (C & IT)	-	11-08-1979	5.5	-	-	01-08-2008	15600+AGP 5400
	6.	Ms. T. Padma	Assistant Professor	B.Sc Physics	M.C.A M.Phil Computer Application	-	20-09-1984	5.5	-	-	01-08-2008	15600+AGP 5400
	7.	Mr.C.A.Sunil Kumar	Assistant Professor	B.Sc Physics	M.C.A Computer Application	-	27-11-1981	4.5	-	-	05-08-2009	15600+AGP 5400
	8.	Ms.R.Ram Mohana Valli	Assistant Professor	B.Sc (Soft.Engg)	M.C.A, M.Phil Computer Application	-	12-12-1984	3.0	-	-	08-02-2010	15600+AGP 5400
	9.	Mrs.V.Anitha	Assistant Professor	B.Sc (Soft.Engg)	M.C.A Computer Application	-	21-07-1985	2.6	-	-	01-06-2011	15600+AGP 5400
	10.	Mrs.C.Briswin Chandra	Assistant Professor	B.Sc Physics	M.C.A Computer Application	-	18-04-1986	2.5	-	-	01-12-2011	15600+AGP 5400
	11.	Mrs.S.K.Sukitha	Assistant Professor	B.Sc Physics	M.C.A Computer Application	-	28-05-1985	3.10	-	-	01-06-2011	15600+AGP 5400
	12.	Mrs.G.Geetha	Assistant Professor	B.Sc Maths	M.C.A Computer Application	-	22-05-1984	4.8	-	-	15-07-2010	15600+AGP 5400

<b>M.B.A</b>	1.	Mrs.J.Mini Priya Raj	Assistant Professor	B.A	M.Tech M.B.A (System)	Ph.D	15-08-1976	12.0	-	-	15-12-2006	15600+AGP 5400
	2.	Mr.S.T.Anand	Assistant Professor	B.Com	M.B.A (Financ)	-	21-03-1980	8.6	1.0	-	16-07-2005	15600+AGP 5400
	3.	Mrs.Babima	Assistant Professor	B.Com	M.B.A Finance & Marketing	-	19-05-1982	5.7	0.10	-	23-06-2008	15600+AGP 5400
	4.	Mrs. N. Thilagavathi	Assistant Professor	B.B.A	M.B.A Marketing	-	23-01-1979	6.4	1.0	-	27-09-2007	15600+AGP 5400
	5.	Ms.T.Suja	Assistant Professor	B.A	M.B.A Finance & Marketing	-	17-04-1981	6.5	-	-	21-08-2007	15600+AGP 5400
	6.	Mr.K.Venkadesh	Assistant Professor	B.A	M.B.A Human resources & Marketing	-	10-05-1982	5.5	-	-	01-07-2008	15600+AGP 5400
	7.	Mr.R.Sivakumar	Assistant Professor	B.Sc (CS)	M.B.A Human resources & Marketing	Ph.D	24-08-1981	4.4	-	-	16-09-2009	15600+AGP 5400
	8.	Mrs.Geo Hepzibha	Assistant Professor	BBA (Mgt.)	M.B.A Human resources & Marketing	-	24-08-1984	3.6	-	-	30-07-2010	15600+AGP 5400
	9.	Mr.S.Kannan	Assistant Professor	B.A (History)	M.B.A Human resources & Marketing	-	27-05-1988	2.4	-	-	21-09-2011	15600+AGP 5400
	10.	Mr.G.Jenit Hanson	Assistant Professor	B.Com (Commerce)	M.B.A Human resources & Marketing	-	05-06-1982	2.1	-	-	17-12-2011	15600+AGP 5400